

Forms

As forms are used, the values entered into form fields are cached on the Live Forms Server until the form is submitted or until the user's [session times out](#). Each time you navigate a browser to a form URL, for example the URL you can copy/paste into a browser from the Email/Web Page share choice, you will see a blank form. That is, the form fields will be blank if you left them blank when you were designing the form in the Form Designer, or will have any default values you entered into the Form Designer. Also the form fields may contain values from your back-end systems if you used the [Advanced Document URI](#) feature or from a [business rule](#) triggered by either the `form.load` or `form.activate` conditions.

If you close your browser window/tab and again open the form via the share URL, you will again get a blank form.

On this page:

- [Making Forms and Flows Public](#)
- [Sharing Forms and Flows](#)
 - [Locate a Form or Flow using the Share URL](#)
- [Anonymous Access to Public Forms/Flows in Container Managed Tenants](#)
- [Browser Session Security](#)
- [Embedding Forms in Your Website](#)
 - [Embedding Multiple Forms in a Single Web Page](#)
 - [Embedded Forms/flows viewed on Mobile Devices](#)
- [Unsaved Changes Warning Message](#)
 - [Unsaved Data Message and Workflows](#)
 - [Turn on/off the Unsaved Changes feature for a form or flow instance](#)
 - [Unsaved Changes Warning Message Configuration Property](#)

Making Forms and Flows Public

The Visibility setting determines who can see and use a form, and whether other Live Forms users can access your forms. You can set this property on the [Forms Home Page](#) or the [Flows Home Page](#) by clicking on the



icon and filling out the [Access Control](#) screen. You can also display the [Access Control wizard](#) by clicking the



icon located on the form/flow designer toolbar.

Sharing Forms and Flows

When you click the



icon to share your form, you'll see a Share Form page with five different options at the right. Three options (Embedded Form, Full Page/Pop Up and Just the iframe) are different ways to let users submit the form from your Web page without having to navigate elsewhere. These options have associated code on the left; this is for you to cut and paste into your Web page. Specific instructions for the code also are provided.

Be sure to use the **Share** icon



in the Forms Designer when you want to share a form or add it to a web page. Do not use the browser URL you see when you're running or testing a form — this URL represents an "instance" of the form, not the actual form itself.

When you run or test a form, you'll notice that the browser URL includes a **-extID** parameter (for example, ... **/popupform?embed=true_extId=0.5427066243050674**). This means that it's an in-memory instance of the form. You can use the **_extID** parameter yourself if you want to collaborate with others on an instance of a form. See the [_extID](#) topic for more information.

SHARE FORM

```
https://staging-app-72.frevvo.com:443/frevvo/web/tn/mycompany/u/8aa27da6-4bef-427c-92e3-6ad8d58e506a/app/_A_tLgAM1EeefQnjpl4JKNQ/formtype/_dyBXIKatEeaTw5HxBZKTQA/popupform
```

1. Copy/paste the link into an email message or include the link in your web page.
2. When clicked, the form will be displayed.
3. The form will be centered and automatically adjusts to height changes.

Note: Your users must have an iframe capable browser such as Internet Explorer 9 or higher, Chrome, Firefox or Safari. Javascript is required to use forms/flows.

Your form can be shared in several ways. Please select one of the options below.

Embedded Form
Add to any web page with auto-resizing.

Embedded Form Link
Used for example, as a portlet preference.

Link (Email/Web page)
Email or link to your form.

Full Page/Popup
Display your form in its own page.

Just the iframe
Raw iframe without auto-resizing.

Raw form link
Raw form without iframe.

Share Links for Forms

SHARE FLOW

```
https://staging-app-72.frevvo.com:443/frevvo/web/tn/mycompany/u/8aa27da6-4bef-427c-92e3-6ad8d58e506a/app/_kGmVvC8bEeaWwokYpNhCfw/flowtype/_L3x2waEnEeSnGL-Wk4Vxg/popupform
```

1. Copy/paste the link into an email message or include the link in your web page.
2. When clicked, the flow will be displayed.
3. The forms in the flow will be centered and automatically adjusts to height changes.

Note: Your users must have an iframe capable browser such as Internet Explorer 9 or higher, Chrome, Firefox or Safari. Javascript is required to use forms/flows.

Your flow can be shared in several ways. Please select one of the options below.

Embedded Flow
Add to any web page with auto-resizing.

Embedded Flow Link
Used for example, as a portlet preference.

Link (Email/Web page)
Email or link to your flow.

Raw flow link
Raw flow without iframe.

Share Links for Flows

The two Link options give you a link to the form/flow. You can send the link in an email or publish it on your web page.

Each option is discussed below. Remember to make your form public or users won't be able to access the form no matter which method of sharing you choose.

- **Embedded Form** – This option enables you to embed a form that will be displayed in your website. Simply copy and paste the code into your web page where you want the form to appear. Live Forms takes care of the rest. This option will render the form on your Web page in its entirety, without requiring users to click scroll bars when using the form. You cannot control the height nor the width that the form will use on your web page when embedded in this fashion. The length used by the form automatically resizes as repeats are added and sections expanded/collapsed or made visible/invisible. Refer to the [EmbeddedForm/flowsonMobileDevices](#) topic for the details regarding mobile devices.
- **Embedded Form Link** – This option should be used to embed your form into a Portlet container.
- **Full Page/Pop Up** – This lets users access the form in its own pop-up window so users can complete the form and return to your Web

page when they are done. It is intended for desktop only.

- Link (Email/Web Page) – This lets you add a link to your form on your Web page or simply email the link to the people whom you want to submit your form.
- Just the iframe – This is similar to the Embedded Form option but requires you to specify your form's width and height. In fact the script tag is the same except it has different [form Url parameters](#). For instance Just the iframe option does not contain `center=true`, so the form will not be centered nor have a border. Using this option, the user may see scroll bars when they use your form if you do not specify a height long enough to contain the form when it is fully expanded. (Remember that your form can "grow" from its initial height if users select repeat items, expand sections that are initially collapsed, and so on.) The height and width are form properties but the height property generally is blank since the form sizes dynamically when you design it. There are a number of freeware tools (for example, MeasureIt) that you can use to measure your form's height.
- Raw Form Link – This lets you email a link to the form just as the Link (Email/Web Page) option does, but it is intended for filling out a form collaboratively and requires coordination between the parties filling out the form. The first person can fill out a portion of the form but must make sure "not" to submit it. He or she then can copy the URL (which will have been updated to collect the entered data) and mail this updated URL to the next collaborator. When this person accesses the URL, the form will be displayed with the values entered by the previous collaborator. The other difference between this option and the Link (Email/Web Page) option is that this option does not include an iframe border decoration.

Keep in mind that if you have shared your form via one of the link options and subsequently marked your form private, users will see an error message indicating that the "Access denied. Are you trying to access a private form / flow?".

Locate a Form or Flow using the Share URL

Live Forms resources, Applications, Forms, Flows, Spaces and more are referenced with opaque URLs. Use of opaque URLs eliminates security issues that may have been present with URLs that exposed a designer user's id. Opaque URLs replace the user id (`.../user/user.id/...`) that was used in the previous format with a universally unique identifier (uuid) `.../u/user.uuid/...`. The uuid, is a randomly generated value that is stored in Live Forms.

The Opaque URL feature provides:

1. URLs that do not include a user's id
2. Backward compatibility for URLs that contain a user's id - they will continue to work.
3. A [reverse lookup function](#) of the opaque URL that can be used to locate a form/flow in a user's account for troubleshooting purposes. This capability is only be available to administrators, tenant administrators and users with the designers or publishers roles in the same tenant.

An example of the opaque URL for a Live Forms space named mycompany is shown below:

```
OLD SPACE URL:  
http(s)://<server>:<port>/frevvo/web/tn/mycompany/user/designer/space/mycompany  
NEW SPACE URL:  
http(s)://<server:port>/frevvo/web/tn/mycompany/u/8aa27da6-4bef-427c-92e3-6ad8d58e506a  
/space/mycompany
```

The opaque URL can be used to determine the Live Forms designer account where a form/flow is located. This "lookup" feature resolves the uuid to a user's id and can be very helpful when troubleshooting. The "lookup" feature is only available to tenant admins, users with the designer/publisher role or the designer/owner of the form/flow

The "lookup" feature works with:

- Type URLs - URLs that include formtype or flowtype in the path - Form/flow Share URLs
- URLs that include the form or flow id in the path
- Instance URLs - browse the Share URL and hit enter

In all cases, follow these steps:

1. Browse the opaque Share or instance URL
2. Remove everything in the URL after the formtype, flowtype, form or flow id path segments
3. Append /lookup to the end of the URL

Example 1:

A user receives an email that includes an opaque URL to a form/flow as shown below. The user reports an issue with the form/flow and requests that the designer investigate. The designer must locate the Live Forms account where the form/flow is located.

```
https://staging-app-72.frevvo.com:443/frevvo/web/tn/mycompany/u/8aa27da6-4bef-427c-92e3-6ad8d58e506a/app/_A_tLgAM1EeefQNjpl4JKNQ/formtype/_dyBXIKatEeaTw5HxBZKTQA/popupform
```

Paste the opaque URL into your browser. Remove **popupform** from the URL and replace it with **lookup** after the slash.

```
https://staging-app-72.frevvo.com:443/frevvo/web/tn/mycompany/u/8aa27da6-4bef-427c-92e3-6ad8d58e506a/app/_A_tLgAM1EeefQNjpl4JKNQ/formtype/_dyBXIKatEeaTw5HxBZKTQA/lookup
```

Press the **Enter** key. Login to the tenant (determined by the tenant name after the /tn in the URL) as an admin, designer or publisher user if presented with the login screen.

The following information about the form/flow display in the browser:

```
Tenant: mycompany  
User: designer  
Application: HR  
Form: Invoice
```

Example 2:

A designer must make changes to a form/flow in their company space at the request of a co-worker. The requesting employee logs into the company space, selects the form/flow from the menu and copies the form/flow instance URL from the browser. An opaque URL such as the one shown below is emailed to the designer. The designer can't remember what user, app, form/flow name that opaque url maps to and uses the lookup feature to find the form/flow they need to fix/enhance.


```
https://staging-app-72.frevvo.com/frevvo/web/tn/mycompany/u/8aa27da6-4bef-427c-92e3-6ad8d58e506a/space/mycompany?mi=12&_formTz=America%2FNew_York&locale=en_US,eng_US,eng,en
```

Paste the opaque URL into your browser. Remove **everything after the uuid**. Replace it with **lookup** after the slash. Press the **Enter** key. Login to the tenant (determined by the tenant name after the /tn in the URL) as an admin, designer or publisher user if presented with the login screen.

```
https://staging-app-72.frevvo.com/frevvo/web/tn/mycompany/u/8aa27da6-4bef-427c-92e3-6ad8d58e506a/lookup
```

The uuid is converted to the user id of the designer who owns the space.

```
https://staging-app-72.frevvo.com/frevvo/web/tn/mycompany/user/designer
```

Login to the tenant as the specified user and edit the space menu to get the raw form/flow link. Remove everything after the formtype, flowtype, value in the opaque Raw Form/flow link. In the example shown, you would remove all characters starting with the question mark 

```
https://staging-app-72.frevvo.com:443/frevvo/web/tn/mycompany/u/8aa27da6-4bef-427c-92e3-6ad8d58e506a/app/_ngEekDxNEeWSMvnDVXXIRg/flowtype/_DxUxwZ8eEeScQa8_307FuQ?_method=post&embed=true
```

Add /lookup to get the application and form/flow name

```
https://staging-app-72.frevvo.com:443/frevvo/web/tn/mycompany/u/8aa27da6-4bef-427c-92e3-6ad8d58e506a/app/_ngEekDxNEeWSMvnDVXXIRg/flowtype/_DxUxwZ8eEeScQa8_307FuQ/lookup
```

The workflow named Example 3 - PO for Sales Review is located in the tenant mycompany, in the designer user account, in the application Purchase Order Completed.

```
User: designer
Application: Purchase Order Completed
Flow: Example 3 - PO for Sales Review
```

Anonymous Access to Public Forms/Flows in Container Managed Tenants

If you are using a tenant configured for a [container security manager](#) and you want to allow anonymous access to your forms/flows, you must manually add "public" to the link to make forms/flows accessible to users who are not logged in. You must do this if you are using any of the URL types in the Share dialog for forms and flows, using a [Live Forms Space](#) or [embedding forms/flows in your website](#). The public URL allows the tenant to be secured while public forms can be accessed anonymously, ex: a job application on an external website.

Here is an example of a public url used to access a form in a container security managed tenant. The form/flow visibility is set to public via the Live Forms [Access Control](#) feature. Anonymous users will be able to access the form as the servlet container will ALLOW access to the frevvo.war and Live Forms' access control will ALLOW access to the form. Close/open your browser or copy/paste the public url into another browser when testing.

```
http://10.0.0.6:8082/frevvo/web/public/tn/ldcsm/user/nancy/app/_KOSm0eEAEeOF6Nc8pkcCvQ/formtype/_OeWt00EAEeOF6Nc8pkcCvQ/popupform
```

You will not see the public url listed in the [Share light box](#).

If you are using a tenant configured for a [container security manager](#) and you want to allow anonymous access to your forms/flows from your website, you must create a [public URL](#).

Browser Session Security

When you [create a new form](#), by default it is marked as private. At this time the only person who can use the form via any of the form's [share choices](#), is the person logged into this Live Forms account. Once you are ready to let others use your form you can [mark the form as public](#). Now anyone that is given the form's Url via any of the form's [share choices](#), has access to use and submit the form.

Private vs public appear to be a binary choice. Either no one has access unless you're logged into the Live Forms account or everyone has access without the need to login. Another way to make the form accessible is to leave the form [locked](#) and share it via browser session restricted access. The Live Forms API can generate form Urls that are only valid for the current browser session. The form Url generated in this way (not via the Share choices) cannot be passed to anyone outside of the session as it will not work

Embedding Forms in Your Website

Live Forms can easily be added into your existing web site. The option above in the Share section explains the code you need to copy into your web page and the different ways that the forms can be added to your site.

1. Copy/paste the script tag into the body of your web page
2. Publish the page on your server.
3. The form will be centered and automatically adjusts to height changes.

Note:Your users must have an iframe capable browser such as Internet Explorer 9 or higher, Chrome, Firefox or Safari. Javascript is required to use forms/flows.

SHARE FORM ✕

```
<script xmlns="http://www.w3.org/1999/xhtml"
  src="https://test-app.frevvo.com:443/frevvo/web/tn/mycompany
/u/8aa27da6-4bef-427c-92e3-6ad8d58e506a/app/_QDidgGGwEeeZjNWktbplXA
/formtype/_TsqGsGMYEeeZjNWktbplXA/embed?id=w3595aa&container=false&
resize=true"
  type="text/javascript"></script>
```

1. Copy/paste the script tag above into the body of your web page
2. Publish the page on your server.
3. The form will be centered and automatically adjusts to height changes.

Note: Your users must have an iframe capable browser such as Internet Explorer 9 or higher, Chrome, Firefox or Safari. Javascript is required to use forms/flows.

Your form can be shared in several ways. Please select one of the options below.

Embedded Form
Add to any web page with auto-resizing.

Embedded Form Link
Used for example, as a portlet preference.

Link (Email/Web page)
Email or link to your form.

Full Page/Popup
Display your form in its own page.

Just the iframe
Raw iframe without auto-resizing.

Raw form link
Raw form without iframe.

Embedding Multiple Forms in a Single Web Page

If your web server and Live Forms form server are in the same domain (in-house likely scenario), you are able to embed as many Live Forms for ms into each of your .html web pages as you wish. In order to do this you must give each form a unique id. So if you copy the Share code into the web page a 2nd time, you must edit id to make them different from the 1st copy/paste. Id can be any string as long as it is unique.

```
<script xmlns="http://www.w3.org/1999/xhtml "
  src="http://localhost:8082/frevvo/web/tn/mycompany/u/a700f434-969e-432a-9779-655f9fc3
0259/app/_QDidgGGwEeeZjNWktbplXA/formtype/_ZLlmkIhDEeeRwFMSX8Dr0Q/embed?id=form1&conta
iner=false&resize=true"
  type="text/javascript">
</script>

<script xmlns="http://www.w3.org/1999/xhtml "
src="http://localhost:8082/frevvo/web/tn/mycompany/u/a700f434-969e-432a-9779-655f9fc30
259/app/_QDidgGGwEeeZjNWktbplXA/formtype/_ZLlmkIhDEeeRwFMSX8Dr0Q/embed?id=form2&contai
ner=false&resize=true"
type="text/javascript">
</script>
```

If you experience problems with your web page not resizing correctly to accommodate multiple embedded forms, try setting the height of the form manually. Open the form in the Forms Designer, click the **Style** tab in the Properties panel, and and type a value in pixels (for example, "720px", "900px", etc.) in the **Height** field to set the form height.

Currently Live Forms does not support the ability to embed multiple Live Forms forms in a single .html web page iin a cross domain configuration. This is the SaaS scenario, where the Live Forms is hosted on app.frevvo.com and your web site is on another domain. In this scenario you currently can only embed a single form into each of your .html web pages.

For this version, embedding the task list successfully into an HTML page requires setting its width. See [URL Parameters](#) for more details.

Embedded Forms/flows viewed on Mobile Devices

By default, forms will display inside your web page in a frame. On mobile only, you can use the showLink URL parameter to display the form as a clickable link or thumbnail instead. The web master can customize the share link using the URL parameters described below.

- showLink - If false (default), show the form in a frame. If true, show as a link and the parameters listed below can be used to customize

the link.

- linkId - id to be applied to the rendered anchor (<a>) tag. If none supplied the id will be a generated unique id.
- linkClass - a space delimited list of one or more classes to be applied to the rendered anchor (<a>) tag. This can be used by the third-party web page designer to style the tag/link.
- linkTitle - any title text to be applied to the rendered anchor (<a>) tag. This will be seen as a tooltip when hovering with the mouse. If not supplied, then the form name will be used.
- linkLabel - any text to be used as the link. If not supplied, then the form name will be used.
- linkTarget - if set then the form will be opened in a new tab/window. Can be any text and is the name of the target window.
- linkThumbnail - if set to 'true', then the form's thumbnail will shown as the link on the web page.
- imgWidth - if linkThumbnail=true, then the width of the thumbnail image. Any css units are acceptable.
- imgHeight - if linkThumbnail=true, then the height of the thumbnail image. Any css units are acceptable.

If the iframe is not properly sized to the viewport on your mobile device, add the following meta tag between the <head> elements in the HTML.

```
<head>
  <meta name="viewport" content="width=device-width, initial-scale=1.0,
maximum-scale=1">
</head>
```

Here is an example of HTML with the meta tag and embedded script:

```
<!DOCTYPE html>
<html xmlns="http://www.w3.org/1999/xhtml">
<head>
  <meta name="viewport" content="width=device-width, initial-scale=1.0,
maximum-scale=1">
</head>
<body>

<div><p>Here is a div with some text. How long is this text? It should wrap around to
the next line since it is a long enough line</p></div>

<script xmlns="http://www.w3.org/1999/xhtml"

src="http://<server>:<port>/frevvo/web/tn/frevvo.com/u/8aa27da6-4bef-427c-92e3-6ad8d58
e506a/app/_bDd4YX76EduXFsA419RQeQ/formtype/_Rw00sMxjEeKp6swhthjzZQ/embed?container=fal
se&amp;center=false&amp;resize=true&amp;border=false"
      type="text/javascript">

</script>
</body>
</html>
```

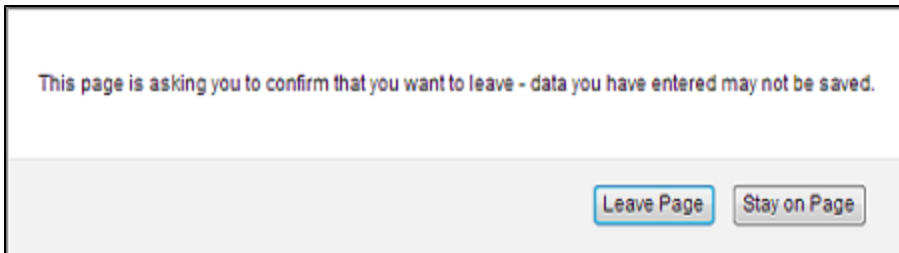
Unsaved Changes Warning Message

Data loss is possible if users filling in a lot of data in a long forms/flows close the browser or tab without saving or submitting. If the Unsaved Changes Warning feature is configured, users will be warned of this situation before the data loss. This applies to use-mode forms and flows only, not edit mode. The warning only shows if there have been changes made to the form/flow. If there are no changes, then no warning is displayed. If the form/flow is [Saved](#) or the [Save on Navigate](#) feature is configured for a flow, then changes are saved and the warning is not produced on any attempt to close the browser.

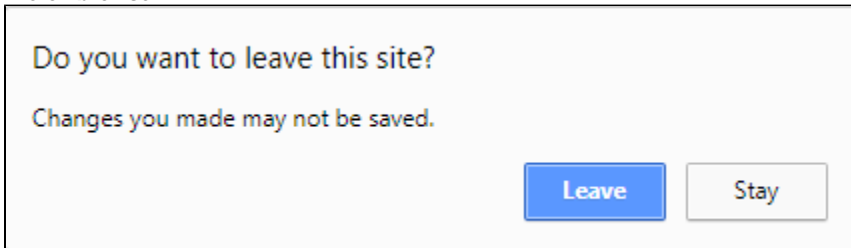
The unsaved changes warning feature is not supported on iOS Safari and only partially supported on Chrome Android. You may notice some inconsistencies with workflows. Refer to the [Unsaved Changes](#) topic for the details.

This feature is not configured in the frevvo Cloud. In-house customers can turn on the Unsaved Changes Warning feature with the **frevvo.unsave d.warning** property.

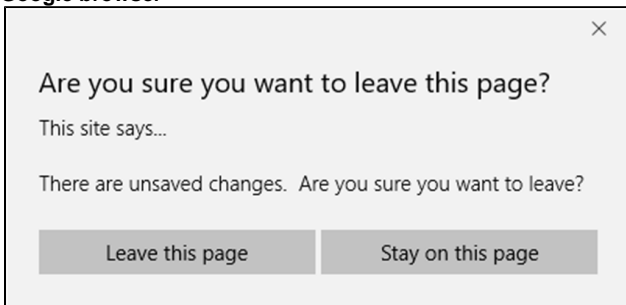
The warning behavior message is browser specific. The messages for Firefox, Chrome and Microsoft Edge are shown below:



Firefox browser



Google browser



Microsoft Edge browser

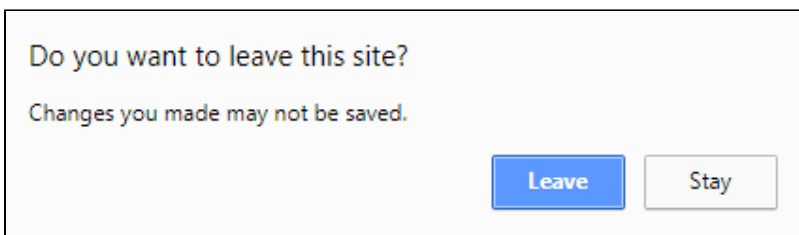
Unsaved Data Message and Workflows

Certain browsers (chrome and firefox, but not IE11 and Edge) will not show the Unsaved Data message on closing the browser window/tab if the user does not click on something.

The Unsaved Changes feature may not work reliably with Live Forms flows in the following scenarios:

1. A user makes a change on step 1 of a screenflow, selects continue but makes no change at all on step 2. They then immediately close the window. No prompt is displayed.

The Unsaved Data Warning will appear when performing a task from the Task List. For example, if you change some data and then click the Inbox icon



Turn on/off the Unsaved Changes feature for a form or flow instance

To turn off the unsaved warning feature for a particular form/flow instance, add the `_unsavedWarning=true/false` URL parameter to the [Share URL](#). Remember to add the `?` at the end of the URL if this is the first URL parameter you are adding and the `&` at the end of the URL if there are other URL parameters already appended to the URL.

Designers may want to do this when developing/testing forms/flow.

?_unsavedWarning URL parameter added to the Link (Email/Web page Share URL

```
https://test-app.frevvo.com:443/frevvo/web/tn/mycompany/u/e5a0e839-1026-4bcf-92a0-5c8e4db9685e/app/_Sf71cMoREeeSeKphUs96Bw/formtype/_DPvGUNm-EeeN8JH6jZk5_Q/popupform?_unsavedWarning=false
```

&_unsavedWarning URL parameter added to the Raw form link Share URLURL

```
https://test-app.frevvo.com:443/frevvo/web/tn/mycompany/u/e5a0e839-1026-4bcf-92a0-5c8e4db9685e/app/_Sf71cMoREeeSeKphUs96Bw/formtype/_DPvGUNm-EeeN8JH6jZk5_Q?_method=post&embedded=true&unsavedWarning=false
```

See [URL Parameters](#) for more information.

Unsaved Changes Warning Message Configuration Property

In-house customers can turn on the Unsaved Data feature by adding the the [frevvo.unsaved.warning](#) property to the `frevvo-config.properties` file. Appending the `_unsavedWarning` URL parameter to a form/flow overrides the value set in this configuration property.