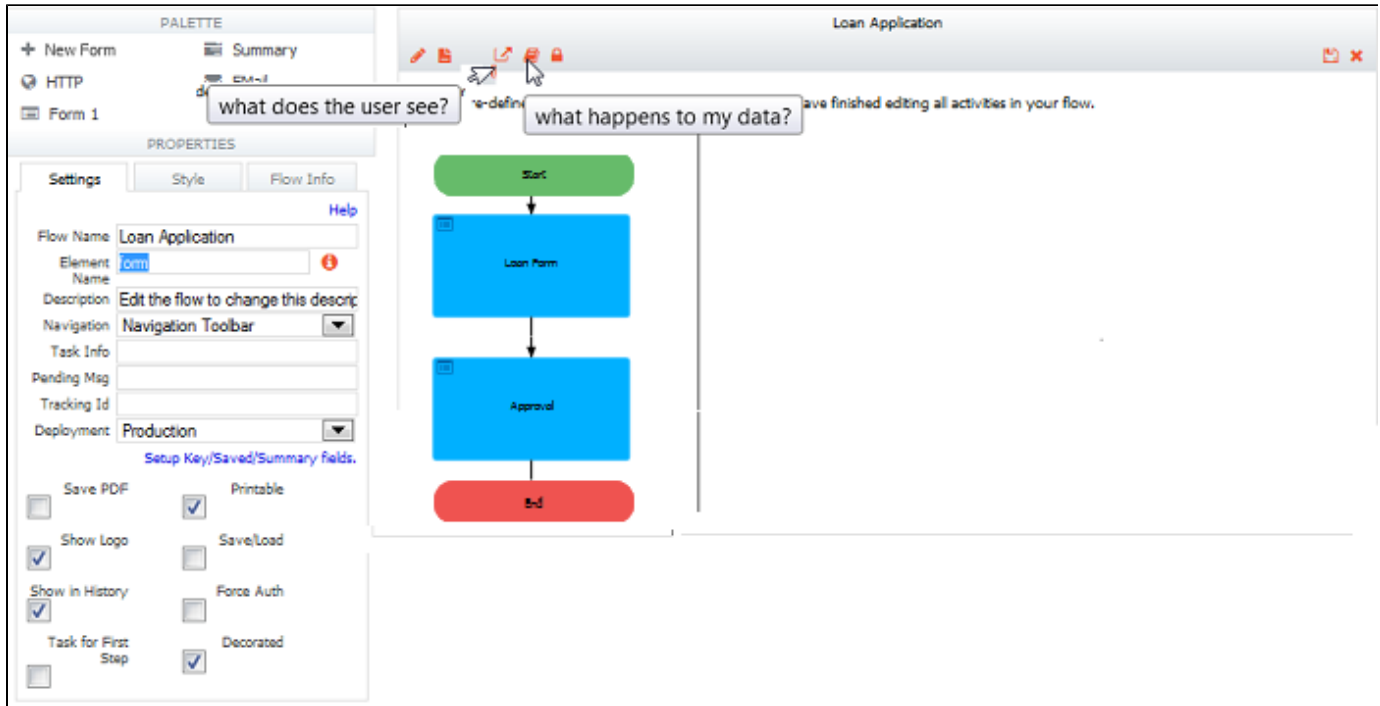


# Form and Doc Action Wizards for Flows

- The flow wizards provide the same functionality as the same wizards in the Form Designer. [View the Form Wizards documentation](#) for detailed information on using them. Note that some wizards are only available for forms and not for flows.
- The SharePoint Connector will not display on the Document Action screen if your tenant is not configured for SharePoint. Refer to the SharePoint Connector chapter for the details.



Wizards make it easier to configure what happens to the data when a user submits your flow and what the users see after submitting the flow. The wizards are accessible from the flow designer toolbar via the



icon labeled what does the user see for Form Action or the



icon labeled what happens to my data for Doc Actions. The action settings are summarized in the flow properties [flow info](#) tab.

When you drag/drop a form into a flow the form's Doc Action does not get carried along. A flow's Doc Action can be configured to happen once all steps of the flow have been performed or in between [individual steps](#). Refer to the [Submissions](#) topic for information on viewing/editing submissions in various states.